



# The Dogwood

---

(919) 420-3354

Sales@SwordDevelopment.com

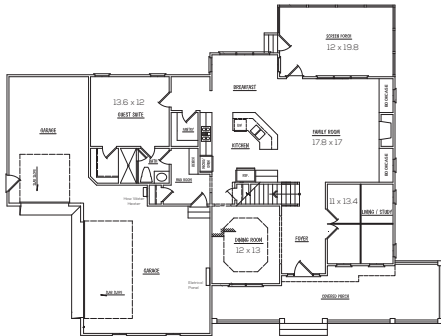


# HOUSE DESCRIPTION

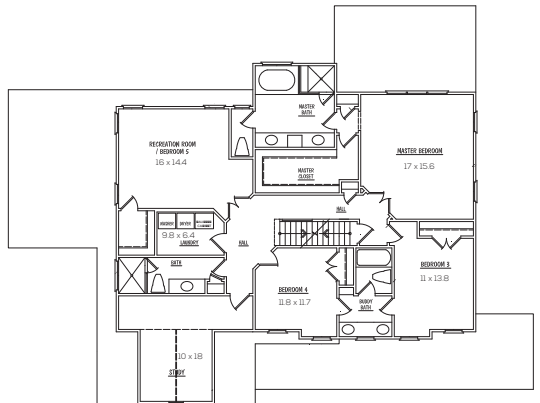
3258 sq. ft.

Southern charm meets function with the Dogwood plan. Immediate curb appeal awaits with an inviting rocking chair front porch. First floor boasts an open layout while maintaining a cozy warm atmosphere. Enjoy your formal dining room, study, entertainers dream kitchen with large island overlooking family room and fireplace. Guest suite with full bath and screened porch complete a picturesque main floor. Owner suite with spa bath and WIC. Large secondary bedrooms and bonus.

## FIRST FLOOR PLAN



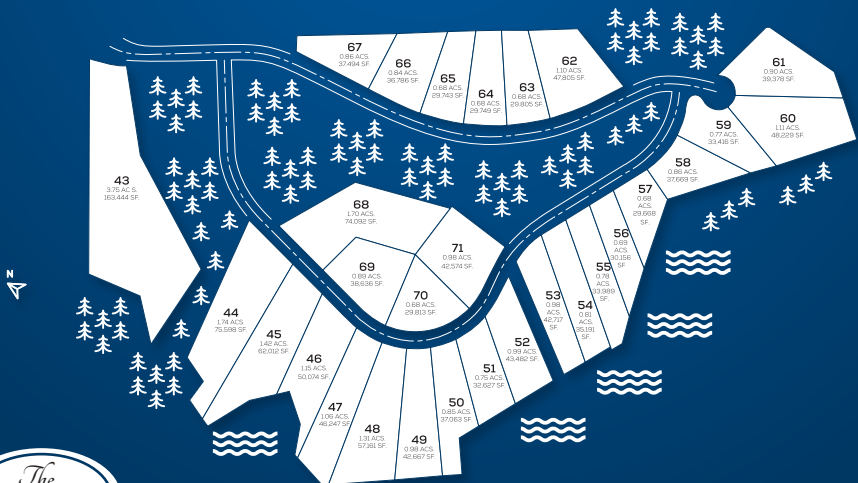
## SECOND FLOOR PLAN



# Home Features

- 30 year architectural roofing shingles
- Engineered Hardwood floors
- Decorative paneling in Dining room and Foyer
- Moen pull out kitchen faucet
- Soft close dovetail drawers in the kitchen
- Walk in closets
- Quartz countertops in the master bath
- Site built engineered framing package
- 5 year HVAC component warranty
- Exclusive 12 month Sword development warranty
- Mornington Estates HOA

## Plat map



# MAP LEGEND

- Public Schools
- Golf/Country Clubs
- Shopping
- Mornington Estates
- Lake
- Hardware
- Sheetz

